



Mobility Planning Challenges for Local Authorities

6. SUMP Conference, Groningen
18. June 2019

Sebastian Spundflasch, Ilmenau University of Technology

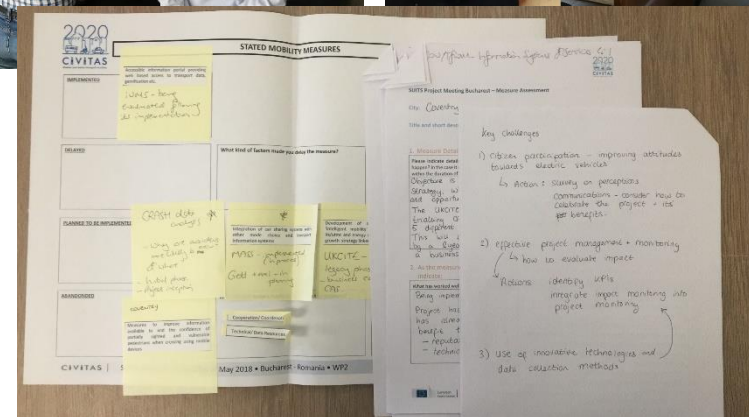
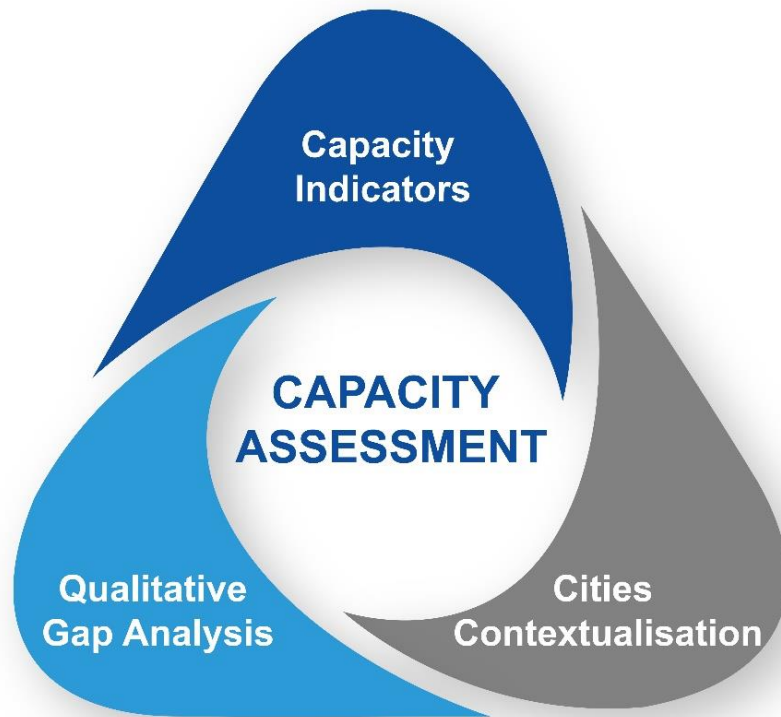
SUITS Objective

“to increase the capacity of local authorities to develop and implement sustainable, inclusive, integrated and accessible transport strategies, policies, technologies, practices, procedures, tools, measures and intelligent transport systems that recognize the end-to-end travel experiences of all users and freight”



SUITS Capacity Assessment Methodology

Triangulation approach to assess the capacity of (small-to-medium) cities to plan and implement sustainable mobility measures



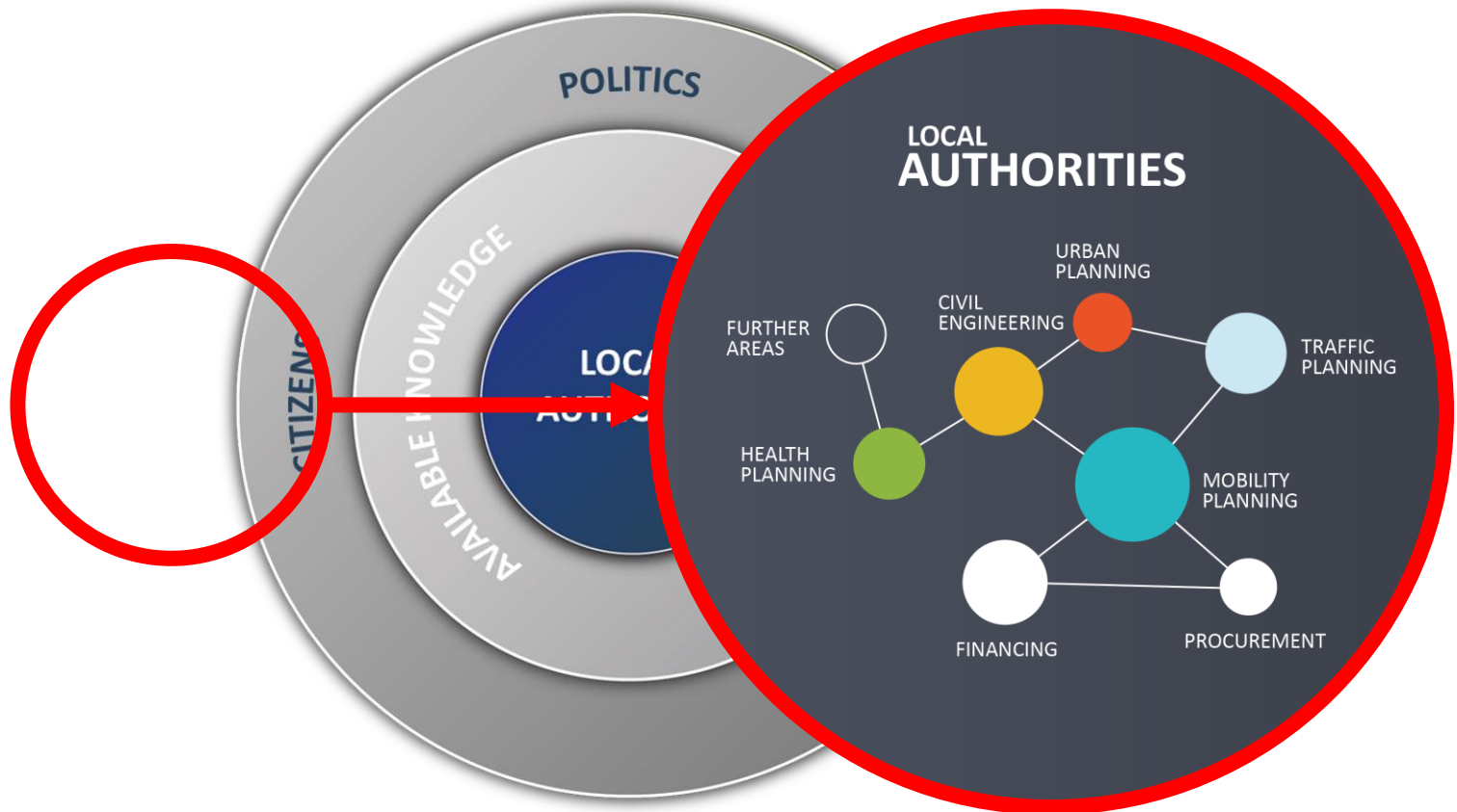
Mobility Planning Challenges

The tension field of mobility planning for Local Authorities



Mobility Planning Challenges

The tension field of mobility planning for Local Authorities



Challenges Local Authorities have to face „internally“

1. Sustainability Thinking



Sustainability Thinking



“If you want to build a ship, don't drum up people to collect wood and don't assign them tasks and work, but rather teach them to long for the endless immensity of the sea.”

Antoine de Saint-Exupery https://www.brainyquote.com/quotes/antoine_de_saintexupery_121261

Picture: <http://ec.europa.eu/environment/europeangreencapital/news/events-archive2/sustainable-mobility-on-a-budget/>

9

Challenges Local Authorities have to face „internally“

1. Sustainability Thinking
2. Institutional Cooperation



Institutional Cooperation – Intermunicipal cooperation



Guideline on Institutional Cooperation (Ch4llenge project)

http://www.eltis.org/sites/default/files/sump-manual_cooperation_en.pdf

Inter-municipal cooperation Introduction Guide By the International Cooperation Agency of the Association of Netherlands Municipalities

http://www.vng-international.nl/wp-content/uploads/2015/06/IMC_EN.pdf

Toolkit on inter-municipal cooperation

<https://rm.coe.int/imc-intermunicipal-cooperation/1680746ec3>

Challenges Local Authorities have to face „internally“

1. Sustainability Thinking
2. Institutional Cooperation
3. Systematic staff deployment and –development



Challenges Local Authorities have to face „internally“

1. Sustainability Thinking
2. Institutional Cooperation
3. Systematic staff deployment and –development
4. Effective project management and monitoring



Challenges Local Authorities have to face „internally“

1. Sustainability Thinking
2. Institutional Cooperation
3. Systematic staff deployment and –development
4. Effective project management and monitoring
5. Knowledge management / knowledge transfer



Challenges Local Authorities have to face „internally“

1. Sustainability Thinking
2. Institutional Cooperation
3. Systematic staff deployment and –development
4. Effective project management and monitoring
5. Knowledge management / knowledge transfer
6. Understanding and applying innovative financing methods



Understanding and applying innovative financing methods



Challenges Local Authorities have to face „internally“

1. Sustainability Thinking
2. Institutional Cooperation
3. Systematic staff deployment and –development
4. Effective project management and monitoring
5. Knowledge management / knowledge transfer
6. Understanding and applying innovative financing methods
7. Innovative Procurement



Mobility Planning Challenges

Challenges for the development of sustainable mobility measures



Challenges in the development of sustainable mobility measures

8. Understanding political interests and affecting political decisions



Challenges in the development of sustainable mobility measures

8. Understanding political interests and affecting political decisions
9. Understanding legal and regulatory framework



Mobility Planning Challenges

Challenges in the development of sustainable mobility measures

8. Understanding political interests and affecting political decisions
9. Understanding legal and regulatory framework
10. Citizen participation



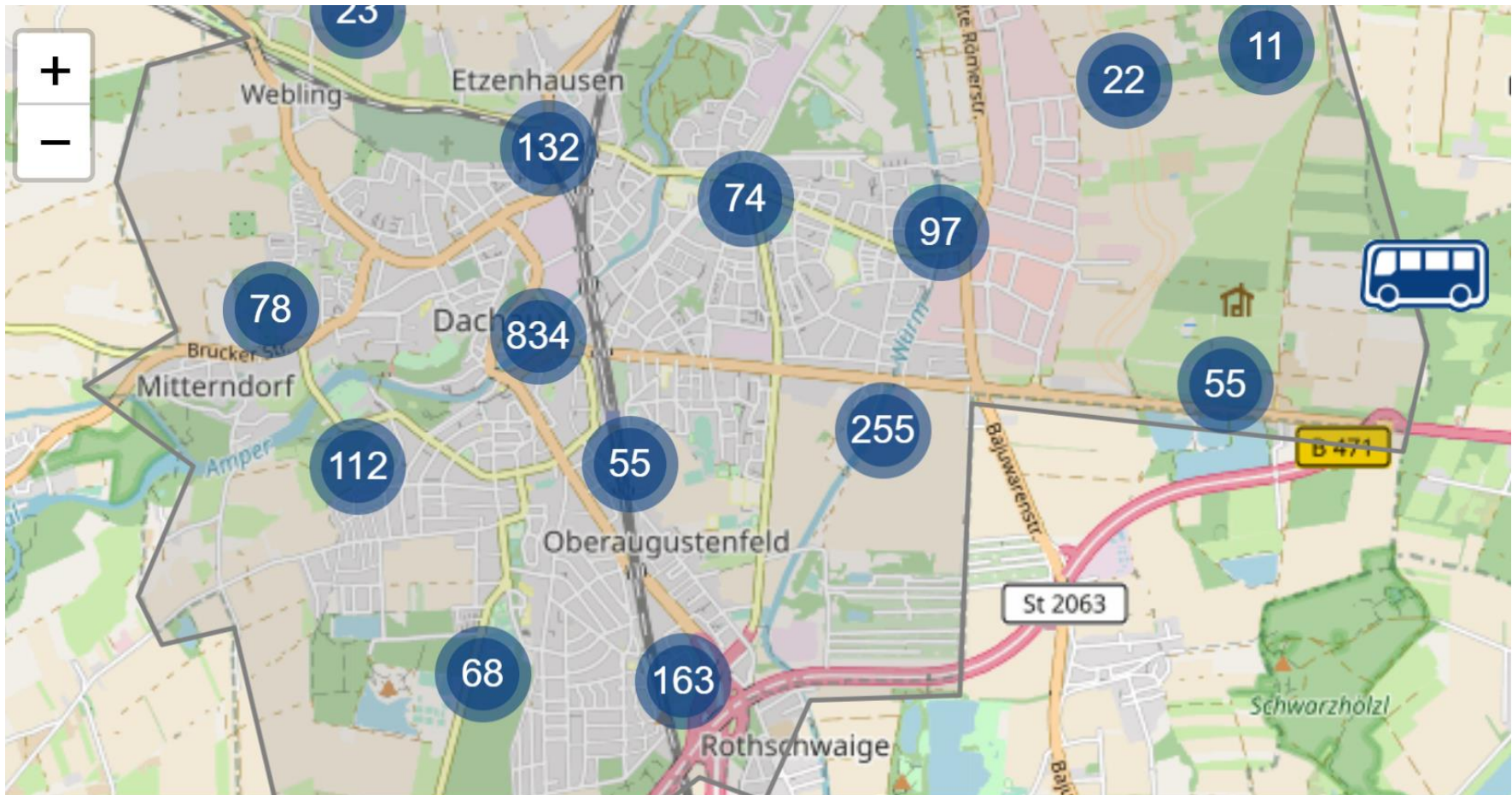
Citizen participation in Dachau

Participation process in the development of a car-reduced residential quarter



Citizen participation in Dachau

General participation procedure for improving urban mobility



Mobility Planning Challenges

Challenges in the development of sustainable mobility measures

8. Understanding political interests and affecting political decisions
9. Understanding legal and regulatory framework
10. Citizen participation
11. Interaction and cooperation with business partners



Mobility Planning Challenges

Challenges in the development of sustainable mobility measures

8. Understanding political interests and affecting political decisions
9. Understanding legal and regulatory framework
10. Citizen participation
11. Interaction and cooperation with business partners
12. Estimating the feasibility and acceptance of measures



Mobility Planning Challenges

Challenges in the development of sustainable mobility measures

8. Understanding political interests and affecting political decisions
9. Understanding legal and regulatory framework
10. Citizen participation
11. Interaction and cooperation with business partners
12. Estimating the feasibility and acceptance of measures
13. Identification and utilization of synergy effects



Mobility Planning Challenges

Challenges in the development of sustainable mobility measures

8. Understanding political interests and affecting political decisions
9. Understanding legal and regulatory framework
10. Citizen participation
11. Interaction and cooperation with business partners
12. Estimating the feasibility and acceptance of measures
13. Identification and utilization of synergy effects
14. Use of innovative technologies and data collection methods



Mobility Planning Challenges

Challenges in the development of sustainable mobility measures

8. Understanding political interests and affecting political decisions
9. Understanding legal and regulatory framework
10. Citizen participation
11. Interaction and cooperation with business partners
12. Estimating the feasibility and acceptance of measures
13. Identification and utilization of synergy effects
14. Use of innovative technologies and data collection methods
15. Application of research knowledge and adaption of Good Practice examples



Validation of Challenges

Knowledge Interest

- General Importance of challenges
- Estimation how cities already cope with the Challenges
- Status on Training/Information Material available

2020 CIVITAS SUITS logo

EUROPEAN COMMISSION
THE CIVITAS INITIATIVE IS CO-FINANCED BY
THE EUROPEAN UNION

SUITS Project - Capacity Building Challenges for Sustainable Mobility Planning

The aim of the Civitas SUITS project is to increase the capacity of small-to-medium sized cities to plan and implement sustainable mobility. Working with our project cities, we identified 15 challenges; cities have to cope with in this process. We claim that increasing the cities capacity in planning and implementing sustainable mobility can be reached by supporting them in these 15 operational fields.

Please support us validating the challenges by participating the short survey!

Cities challenges in sustainable urban mobility planning

1. Institutional cooperation Close cooperation between local and regional authorities and administrative bodies who are directly and indirectly involved in the development of sustainable mobility measures.	8. Innovative procurement Consideration of sustainable principles in Procurement. Application of the new sustainability criteria, set out in the new directives (2014/26/EU, 2014/24/EU and 2014/118/EU) that have arisen as a result of the EU Procurement Reform.
2. Interaction and cooperation with business partners Developing a precise understanding of business partners' requirements and capacities, to provide better services according to the user needs and the cities' local conditions.	9. Understanding legal and regulatory framework Consideration of various legal and regulatory conditions which form the operational framework for the planning and implementation of measures.
3. Citizen participation The participation of citizens includes informing citizens and involving them actively in planning processes.	10. Systematic staff development and -disengagement Systematic further development of personnel: Encouraging staff, knowledge and expertise that exists among the various partners. Deciding which competencies will be developed within the administration and what will be outsourced.
4. Use of innovative technologies and data collection methods The willingness to use innovative technologies, methods and tools for the collection and efficient collection of data and it's use for the planning and monitoring of mobility measures.	11. Encouraging the mobility and acceptance of measures The use of innovative measures behaviour to gain a better understanding for upcoming problems and to be able to make predictions for sustainability and acceptance.
5. Application of research knowledge and adoption of Good Practice examples Inspiration through research knowledge and good practice examples and their application to similar problems, considering local context and framework conditions.	12. Sustainability framing Involving sustainability principles in the local priorities and the philosophy of the administration. Identifying and setting sustainability targets in mobility planning.
6. Understanding political interests and affecting political decisions Aligning political interests, cooperation with politics and affecting political decisions through evidence and expert advice.	13. Effective project management and monitoring Clear vision and continuous optimisation of project management and monitoring processes.
7. Understanding and applying innovative financing methods Identification, adoption and application of alternatives/innovative financing methods for projects that go beyond the usual funding methods.	14. Knowledge management / Knowledge transfer Encouraging knowledge exchange through enhancement and establishment of sustainable processes for knowledge management/knowledge transfer.
	15. Identification and utilization of synergy effects Recognizing and exploiting interconnections between measures.

Rating in the planning and monitoring of the desired measures (4 = very important, 5 = essential)

1	<input type="checkbox"/>	<input type="checkbox"/>	<input type="checkbox"/>
2	<input type="checkbox"/>	<input type="checkbox"/>	<input type="checkbox"/>
3	<input type="checkbox"/>	<input type="checkbox"/>	<input type="checkbox"/>
4	<input type="checkbox"/>	<input type="checkbox"/>	<input type="checkbox"/>
5	<input type="checkbox"/>	<input type="checkbox"/>	<input type="checkbox"/>
6	<input type="checkbox"/>	<input type="checkbox"/>	<input type="checkbox"/>
7	<input type="checkbox"/>	<input type="checkbox"/>	<input type="checkbox"/>
8	<input type="checkbox"/>	<input type="checkbox"/>	<input type="checkbox"/>
9	<input type="checkbox"/>	<input type="checkbox"/>	<input type="checkbox"/>
10	<input type="checkbox"/>	<input type="checkbox"/>	<input type="checkbox"/>
11	<input type="checkbox"/>	<input type="checkbox"/>	<input type="checkbox"/>
12	<input type="checkbox"/>	<input type="checkbox"/>	<input type="checkbox"/>
13	<input type="checkbox"/>	<input type="checkbox"/>	<input type="checkbox"/>
14	<input type="checkbox"/>	<input type="checkbox"/>	<input type="checkbox"/>
15	<input type="checkbox"/>	<input type="checkbox"/>	<input type="checkbox"/>

Country:
Profession:

How often do you participate in mobility planning?
 1 2 3 4 5 N/A

Challenges Validation



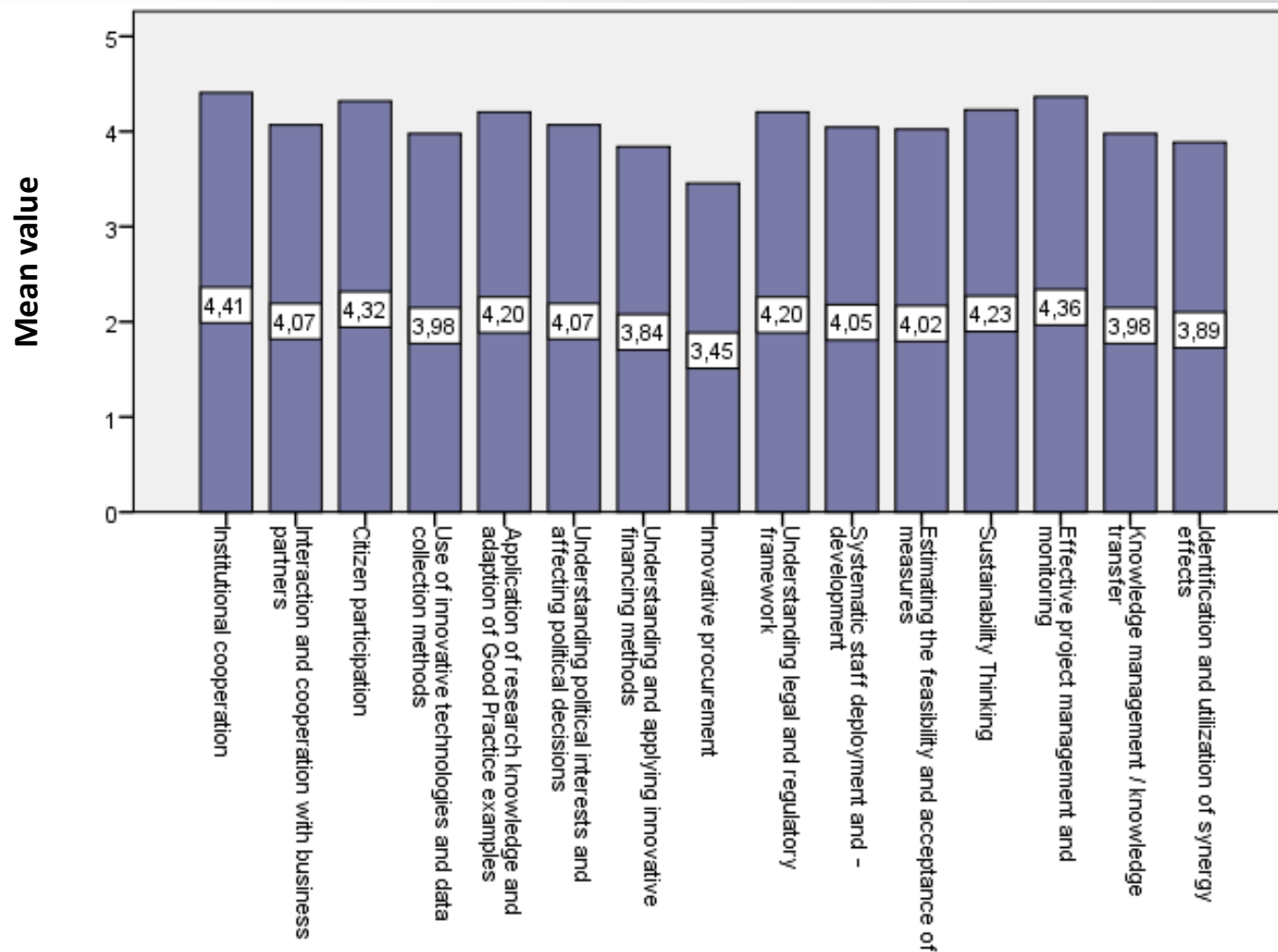
Question 1

From your experience, please rate the general importance of the following challenges for cities when planning and implementing sustainable mobility measures!

Linkert Scale: 1 = not important at all 5 = very important



1. Importance of Challenges



N=46

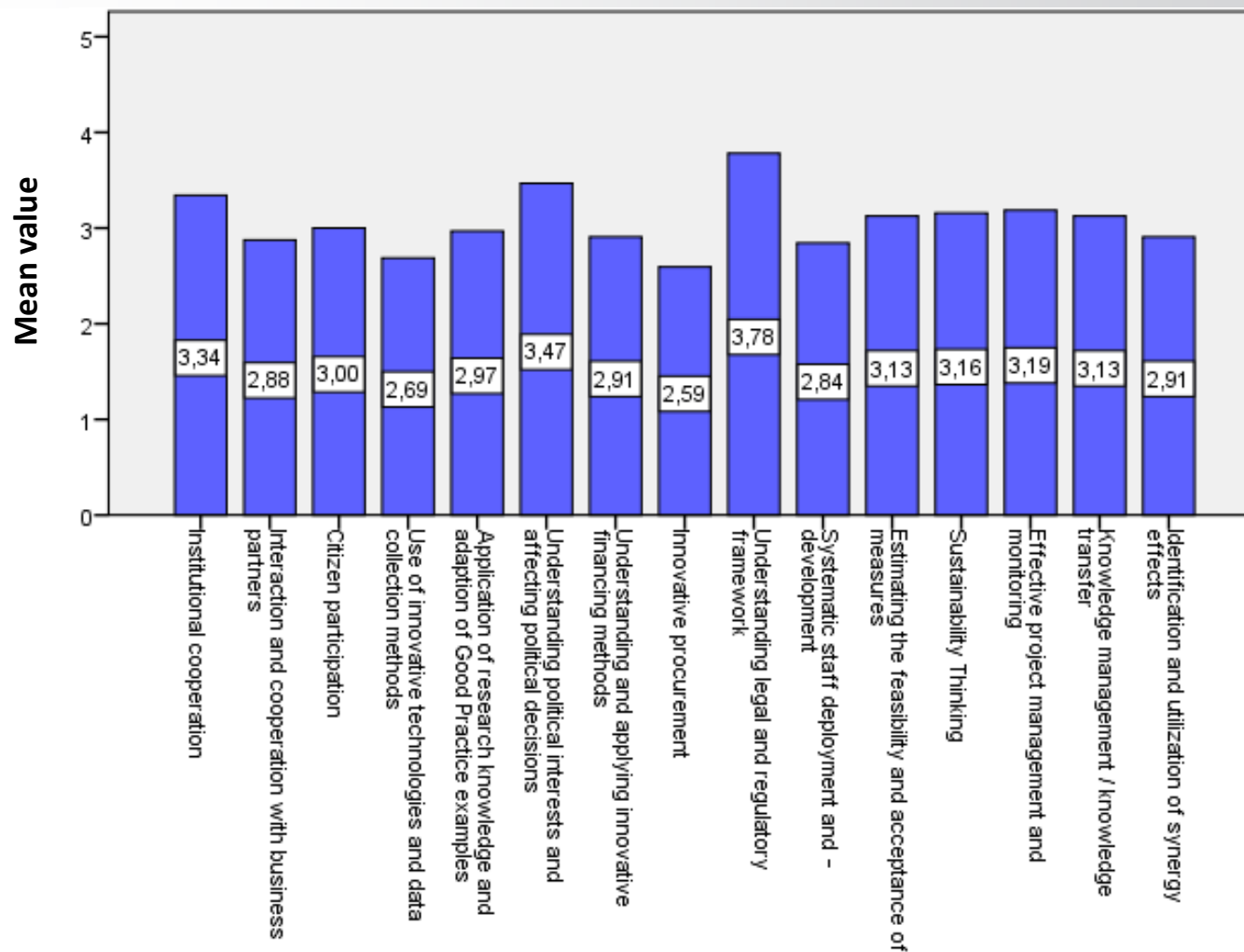
1 = not important at all 5 = very important

Question 2

How well you think, the city you indicated, cope with the individual challenges in their mobility planning activities? (Only if you have experiences with a concrete city or mobility planners)

Linkert Scale: 1 = poor performance 5 = strong performance

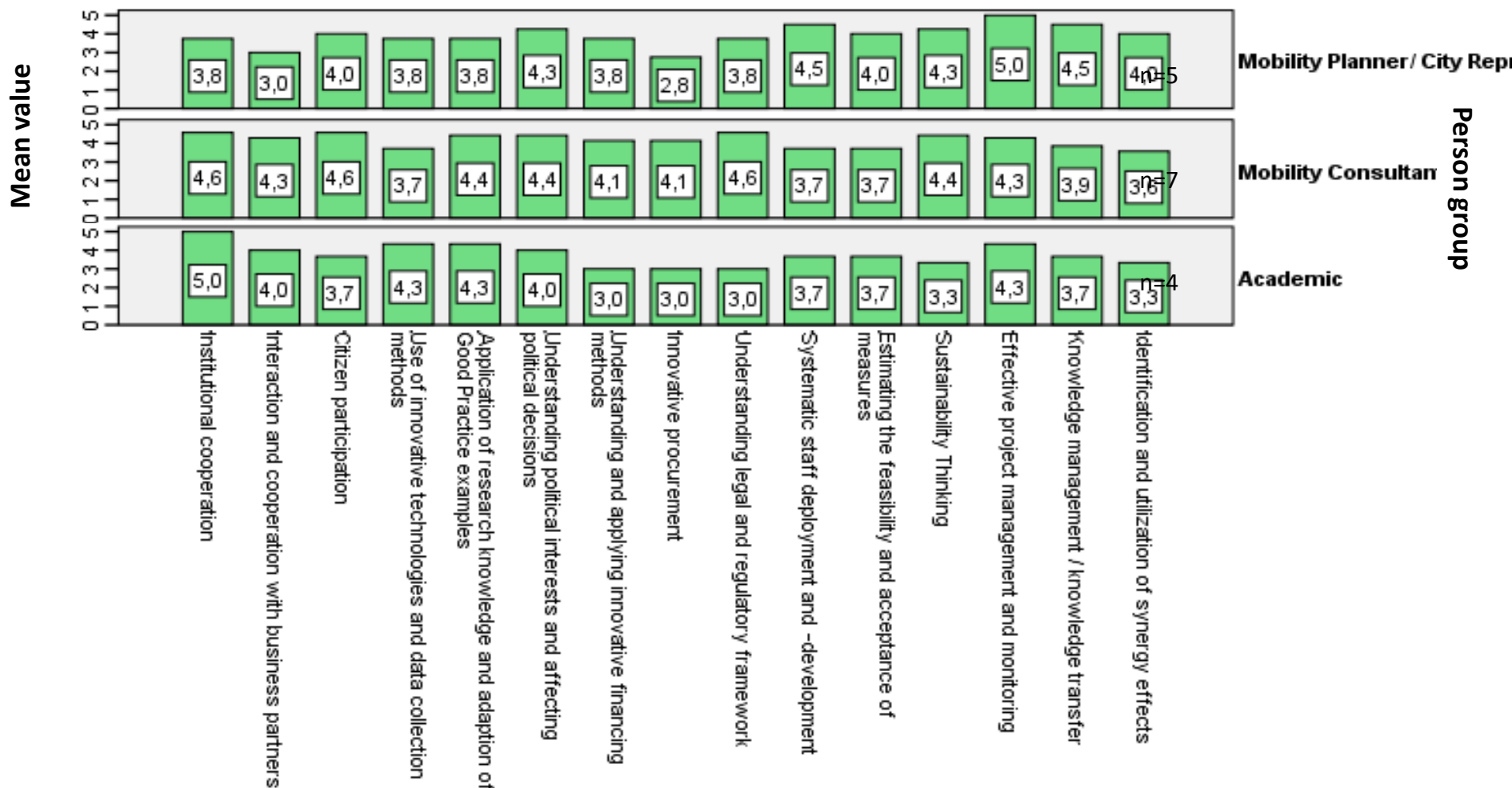
2. Opinion on how cities cope with the challenges



N=35

1 = poor performance 5 = strong performance

2. Opinion on how cities cope with the challenges



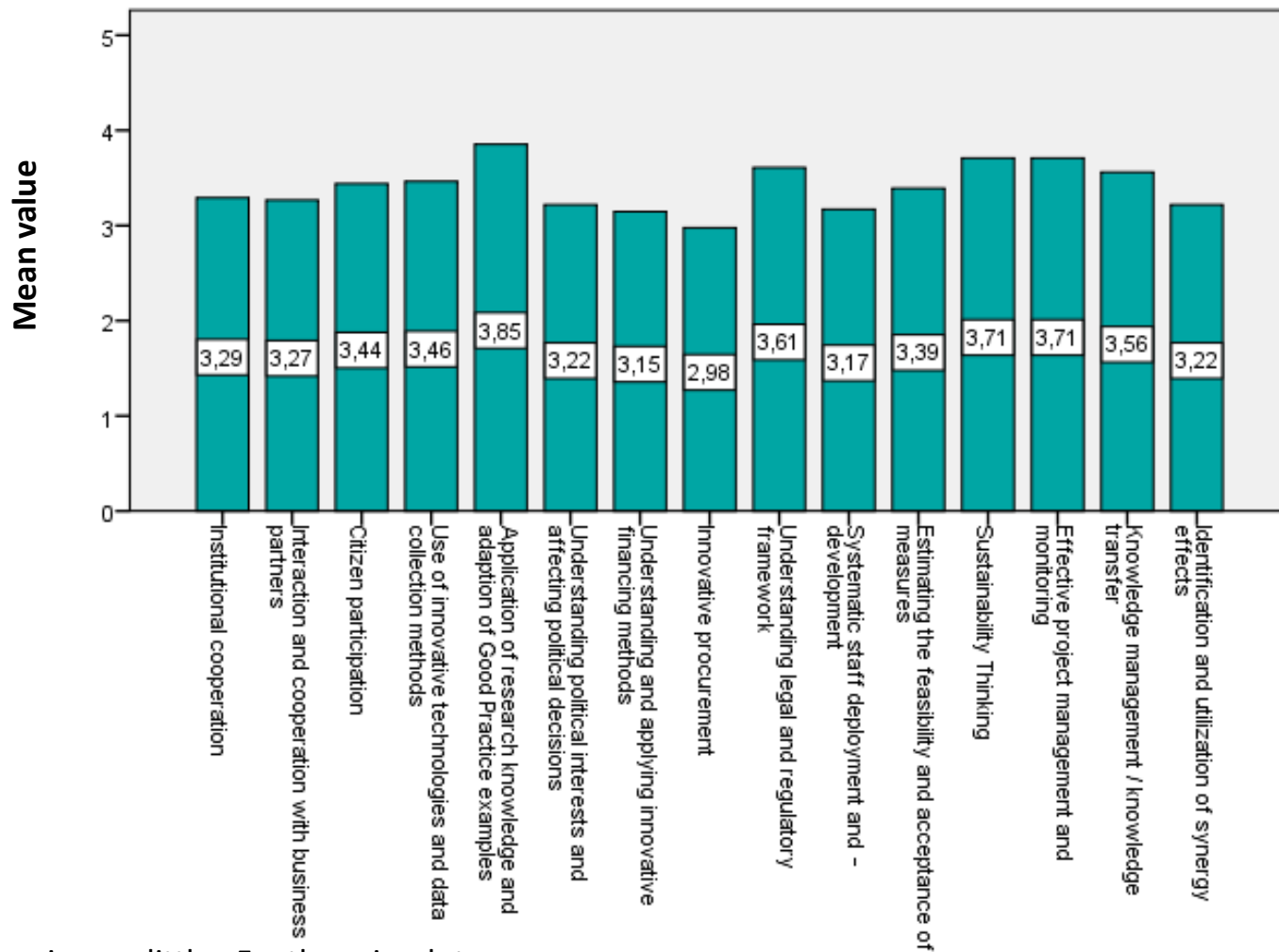
1 = poor performance 5 = strong performance

Question 3

Please rate from your experiences, to which extent there is knowledge and training material already available to address the individual challenges!

Linkert Scale: 1 = there is very little 5 = there is a lot

3. Materials available to address the Challenges



N=46

1 = there is very little 5 = there is a lot



Thank you!

Sebastian Spundflasch

Contact Details

Ilmenau University of Technology

Institute for Media Technology

sebastian.spundflasch@tu-ilmenau.de



THE CIVITAS INITIATIVE
IS CO-FINANCED BY THE
EUROPEAN UNION